

SACC - CABLE TO CABLE COMPRESSION GROUNDING SYSTEM

SACC-70-70

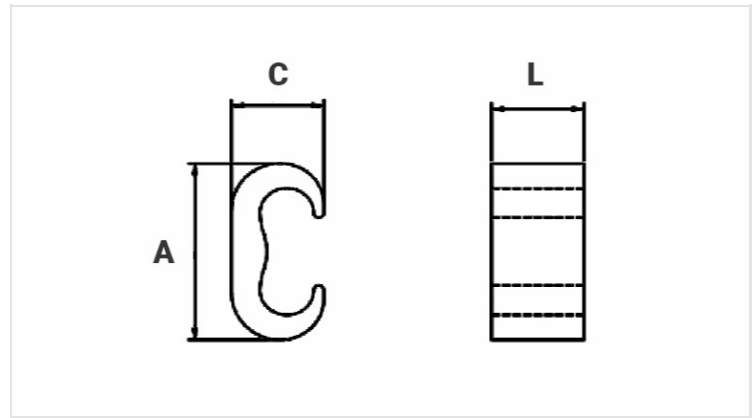
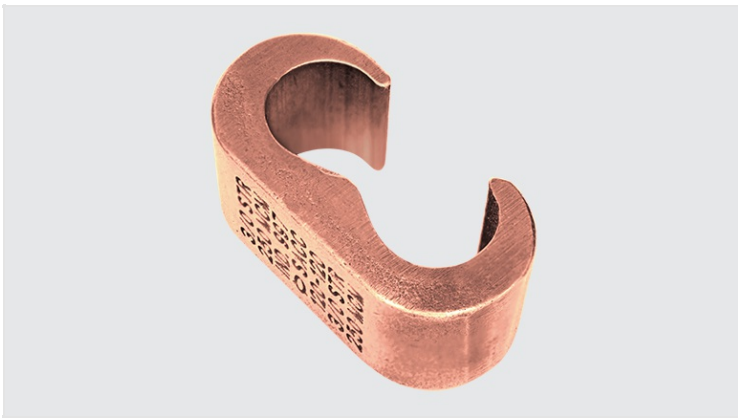
Description

Purpose: Cable to cable splice or branch. Suitable for COPPERSTEEL and copper cables.

Characteristics: Compression connection. High resistance to corrosion. It can be buried directly into the ground or concrete.

Application: Grounding systems in general (power distribution systems, grounding grids, residential, building and industrial grounding), grounding in telecommunication networks, grounding in substations).

Material: Copper alloy, supplied with antioxidant compound INTELTROX-Cu.



Datasheet

Conductor

Principal

AWG/MCM

2 - 2/0

mm²

35 - 70

Derivação

AWG/MCM

6 - 2/0

mm²

16 - 70

Die Index

IU-O

Application Tool

AY-96/CY-96

Compressions

1

Dimensions (mm)

L

19,0

A

39,0

C

19,0

Package

Qtd / Emb

40

Peso Unit. (g)

56,80