

**TM - COPPER COMPRESSION TERMINAL (ONE HOLE / SHORT BARREL)**

TM-10-8

**Description**

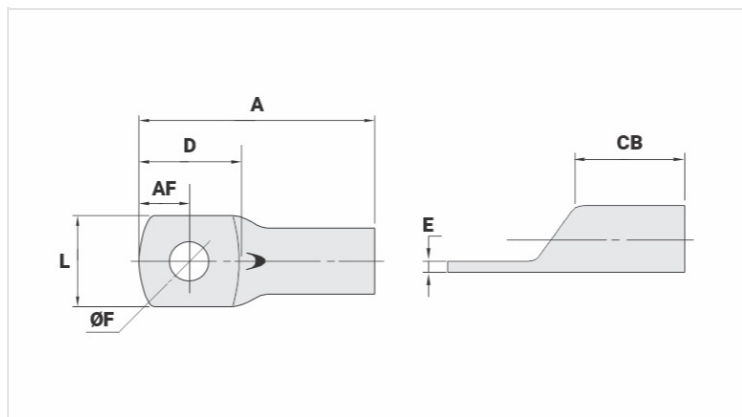
**Purpose:** Termination of copper conductors.

**Characteristics:** High electrical conductivity and corrosion resistance. Pad with several hole diameter options and optimum electrical contact.

**Applications:** Electrical panels, circuit breaker connections, motors, machines, busbars, electrical distribution boards, among others.

**Material:** Electrolytic copper.

**Finish:** Tin plated.



**Datasheet**

**Conductors - Cross Section (mm<sup>2</sup>)**

10

**Dimensions (mm)**

Diâmetro do Furo (mm)

8,5

Parafuso\*

Pol.

5/16

Métrico

M8

L

12,0

A

27,6

CB

8,0

AF

7,0

D

15,0

E

1,5

**Current (A)**

101

**Application Tool**

Alicate Mecânico

Modelo

AT-60/68

Matriz (AT-60)

IW-8

Alicate Hidráulico (AY-96 / CY-96)

Matriz Circunf.

IU-8

Matriz Hexagonal

H-8

**Package**

Qtd / Emb

100

Peso Unit. (g)

2,30