

**TM - COPPER COMPRESSION TERMINAL (ONE HOLE / SHORT BARREL)**

TM-16

**Description**

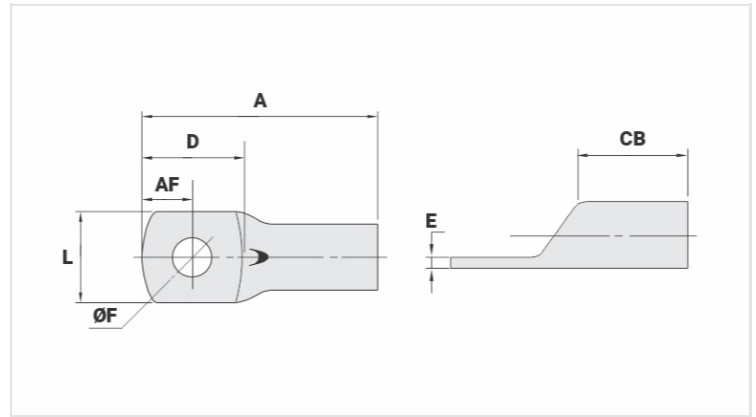
**Purpose:** Termination of copper conductors.

**Characteristics:** High electrical conductivity and corrosion resistance. Pad with several hole diameter options and optimum electrical contact.

**Applications:** Electrical panels, circuit breaker connections, motors, machines, busbars, electrical distribution boards, among others.

**Material:** Electrolytic copper.

**Finish:** Tin plated.



**Datasheet**

**Conductors - Cross Section (mm<sup>2</sup>)**

16

**Dimensions (mm)**

Diâmetro do Furo (mm)

5,2

Parafuso\*

Pol.

3/16

Métrico

M5

L

11,3

A

28,0

CB

10,0

AF

6,0

D

13,5

E

2,0

**Current (A)**

137

**Application Tool**

Alicate Mecânico

Modelo

AT-60/68

Matriz (AT-60)

IW-5

Alicate Hidráulico (AY-96 / CY-96)

Matriz Circunf.

IU-5

Matriz Hexagonal

H-5

**Package**

Qtd / Emb

100

Peso Unit. (g)

5,0