

TM - COPPER COMPRESSION TERMINAL (ONE HOLE / SHORT BARREL)

TM-35-6

Description

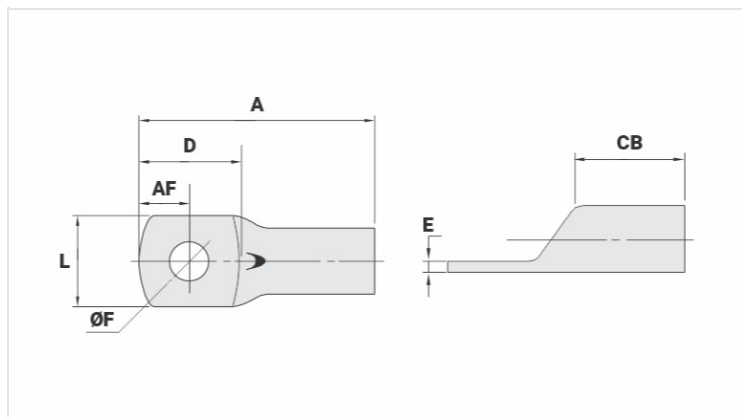
Purpose: Termination of copper conductors.

Characteristics: High electrical conductivity and corrosion resistance. Pad with several hole diameter options and optimum electrical contact.

Applications: Electrical panels, circuit breaker connections, motors, machines, busbars, electrical distribution boards, among others.

Material: Electrolytic copper.

Finish: Tin plated.



Datasheet

Conductors - Cross Section (mm²) 35

Dimensions (mm)

Diâmetro do Furo (mm)	6,5
Parafuso*	
Pol.	5/16
Métrico	M8
L	15,0
A	36,0
CB	12,0
AF	8,0
D	17,5
E	2,4

Current (A) 226

Application Tool

Alicate Mecânico	
Modelo	AT-60/68
Matriz (AT-60)	IW-4
Alicate Hidráulico (AY-96 / CY-96)	
Matriz Circunf.	IU-2
Matriz Hexagonal	H-2

Package

Qtd / Emb

100

Peso Unit. (g)

10,00