

**TM - COPPER COMPRESSION TERMINAL (ONE HOLE / SHORT BARREL)**

TM-70-8

**Description**

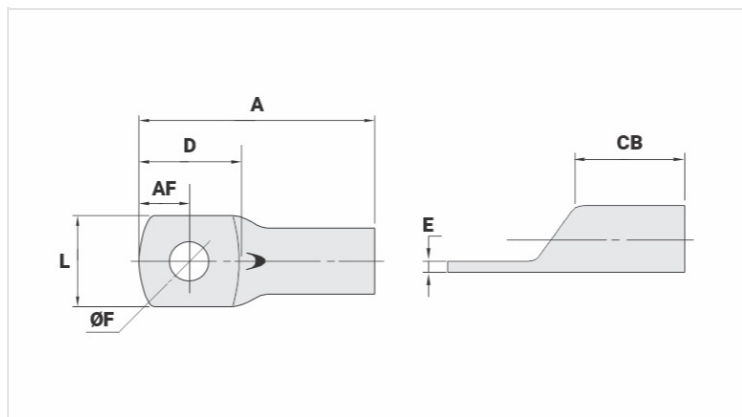
**Purpose:** Termination of copper conductors.

**Characteristics:** High electrical conductivity and corrosion resistance. Pad with several hole diameter options and optimum electrical contact.

**Applications:** Electrical panels, circuit breaker connections, motors, machines, busbars, electrical distribution boards, among others.

**Material:** Electrolytic copper.

**Finish:** Tin plated.



**Datasheet**

**Conductors - Cross Section (mm<sup>2</sup>)** 70

**Dimensions (mm)**

Diâmetro do Furo (mm) 8,5

Parafuso\*

Pol. 3/8

Métrico M10

L 20,3

A 46,0

CB 16,5

AF 10,0

D 22,0

E 3,0

**Current (A)** 353

**Application Tool**

Alicate Mecânico

Modelo AT-60/68

Matriz (AT-60) IW-26

Alicate Hidráulico (AY-96 / CY-96)

Matriz Circunf. IU-26

Matriz Hexagonal H-26

**Package**

Qtd / Emb

50

Peso Unit. (g)

22,50