

TM-L - COPPER COMPRESSION TERMINAL (ONE HOLE / LONG BARREL)

TM-10-L

Description

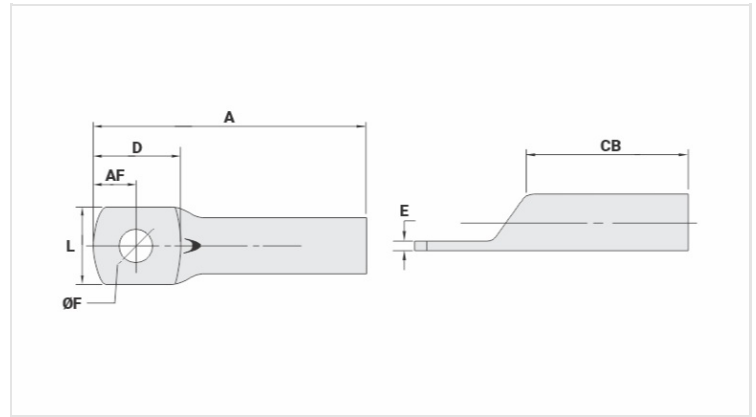
Purpose: Termination of copper conductors.

Characteristics: High electrical conductivity and corrosion resistance. Pad with several hole diameter options and optimum electrical contact.

Applications: Electrical panels, circuit breaker connections, motors, machines, busbars, electrical distribution boards, among others.

Material: Electrolytic copper.

Finish: Tin plated.



Datasheet

Conductors - Cross Section (mm²) 10

Dimensions (mm)

| | |
|-----------------------|------|
| Diâmetro do Furo (mm) | 5,2 |
| Parafuso* | |
| Pol. | 3/16 |
| Métrico | M5 |
| L | 8,6 |
| A | 31,0 |
| CB | 16,0 |
| AF | 5,0 |
| D | 11,0 |
| E | 1,5 |

Current (A) 101

Application Tool

| | |
|------------------------------------|----------|
| Alicate Mecânico | |
| Modelo | AT-60/68 |
| Matriz (AT-60) | IW-8 |
| Alicate Hidráulico (AY-96 / CY-96) | |
| Matriz Circunf. | IU-8 |
| Matriz Hexagonal | H-8 |

Package

Qtd / Emb

100

Peso Unit. (g)

3,10