

**TM-L - COPPER COMPRESSION TERMINAL (ONE HOLE / LONG BARREL)**

TM-10-L-6

**Description**

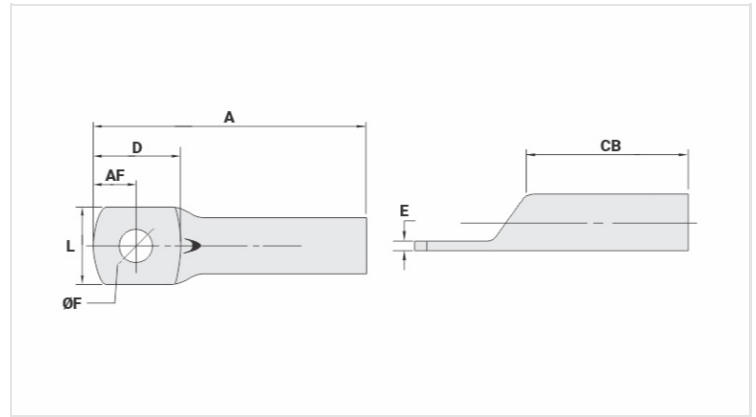
**Purpose:** Termination of copper conductors.

**Characteristics:** High electrical conductivity and corrosion resistance. Pad with several hole diameter options and optimum electrical contact.

**Applications:** Electrical panels, circuit breaker connections, motors, machines, busbars, electrical distribution boards, among others.

**Material:** Electrolytic copper.

**Finish:** Tin plated.



**Datasheet**

**Conductors - Cross Section (mm<sup>2</sup>)** 10

**Dimensions (mm)**

Diâmetro do Furo (mm) 6,5

Parafuso\*

Pol. 3/16

Métrico M5

L 8,6

A 31,0

CB 16,0

AF 5,0

D 11,0

E 1,5

**Current (A)** 101

**Application Tool**

Alicates Mecânico

Modelo AT-60/68

Matriz (AT-60) IW-8

Alicates Hidráulico (AY-96 / CY-96)

Matriz Circunf. IU-8

Matriz Hexagonal H-8

**Package**

Qtd / Emb

100

Peso Unit. (g)

3,0