

**TM-L - COPPER COMPRESSION TERMINAL (ONE HOLE / LONG BARREL)**

TM-185-L-17

**Description**

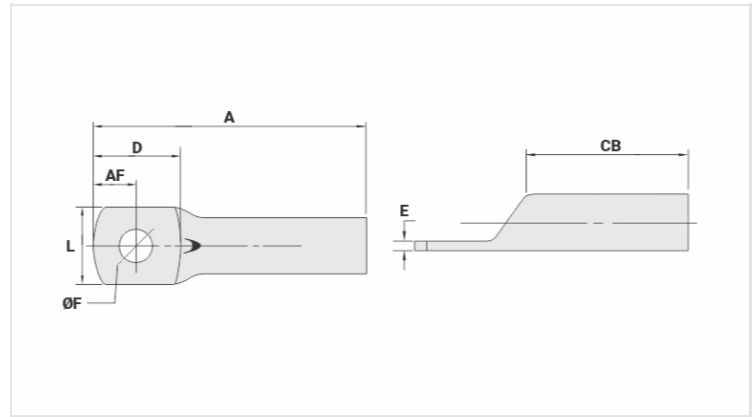
**Purpose:** Termination of copper conductors.

**Characteristics:** High electrical conductivity and corrosion resistance. Pad with several hole diameter options and optimum electrical contact.

**Applications:** Electrical panels, circuit breaker connections, motors, machines, busbars, electrical distribution boards, among others.

**Material:** Electrolytic copper.

**Finish:** Tin plated.



**Datasheet**

**Conductors - Cross Section (mm<sup>2</sup>)** 185

**Dimensions (mm)**

Diâmetro do Furo (mm) 17,5

Parafuso\*

Pol. 1/2

Métrico M12

L 32,0

A 80,0

CB 39,0

AF 13,5

D 29,5

E 3,8

**Current (A)** 661

**Application Tool**

Alicate Mecânico

Modelo -

Matriz (AT-60) -

Alicate Hidráulico (AY-96 / CY-96)

Matriz Circunf. IU-31

Matriz Hexagonal H-31

**Package**

Qtd / Emb

25

Peso Unit. (g)

76,00