

TM-L - COPPER COMPRESSION TERMINAL (ONE HOLE / LONG BARREL)

TM-240-L

Description

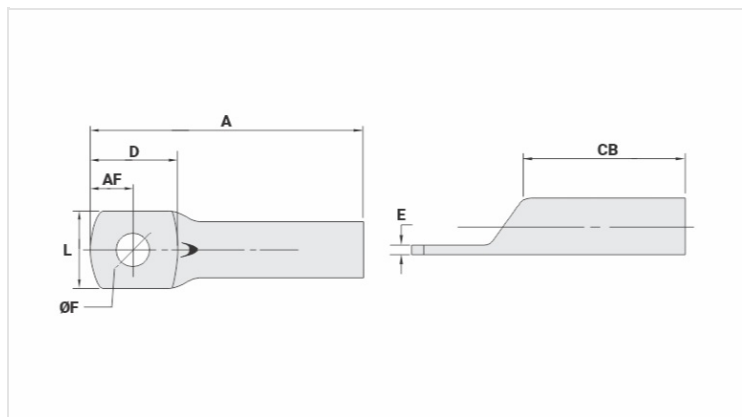
Purpose: Termination of copper conductors.

Characteristics: High electrical conductivity and corrosion resistance. Pad with several hole diameter options and optimum electrical contact.

Applications: Electrical panels, circuit breaker connections, motors, machines, busbars, electrical distribution boards, among others.

Material: Electrolytic copper.

Finish: Tin plated.



Datasheet

Conductors - Cross Section (mm²)

240

Dimensions (mm)

Diâmetro do Furo (mm)

13,8

Parafuso*

Pol.

1/2

Métrico

M12

L

38,0

A

93,5

CB

43,0

AF

17,0

D

35,0

E

4,8

Current (A)

781

Application Tool

Alicate Mecânico

Modelo

-

Matriz (AT-60)

-

Alicate Hidráulico (AY-96 / CY-96)

Matriz Circunf.

IU-34

Matriz Hexagonal

H-34

Package

Qtd / Emb

15

Peso Unit. (g)

138,00