

**TM-2 - COPPER COMPRESSION TERMINAL (TWO HOLES / SHORT BARREL)**

TM-16-2

**Description**

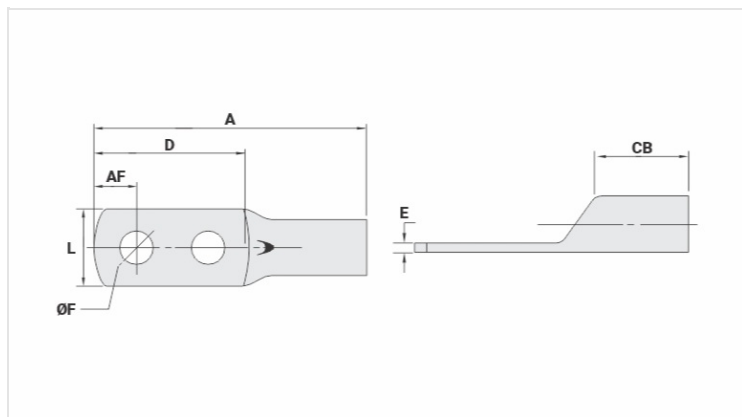
**Purpose:** Termination of copper conductors.

**Characteristics:** High electrical conductivity and corrosion resistance. Pad with several hole diameter options and optimum electrical contact.

**Applications:** Electrical panels, circuit breaker connections, motors, machines, busbars, electrical distribution boards, among others.

**Material:** Electrolytic copper.

**Finish:** Tin plated.



**Datasheet**

**Conductors - Cross Section (mm<sup>2</sup>)** 16

**Dimensions (mm)**

Diâmetro do Furo (mm) 6,5

Parafuso\*

Pol. 1/4

Métrico M6

L 11,3

A 43,5

CB 10,0

AF 6,0

D 29,5

E 2,0

**Current (A)** 137

**Application Tool**

Alicate Mecânico

Modelo AT-60/68

Matriz (AT-60) IW-5

Alicate Hidráulico (AY-96 / CY-96)

Matriz Circunf. IU-5

Matriz Hexagonal H-5

**Package**

Qtd / Emb

50

Peso Unit. (g)

7,40