

TM-2L - COPPER COMPRESSION TERMINAL (TWO HOLES / LONG BARREL)

TM-16-2L

Description

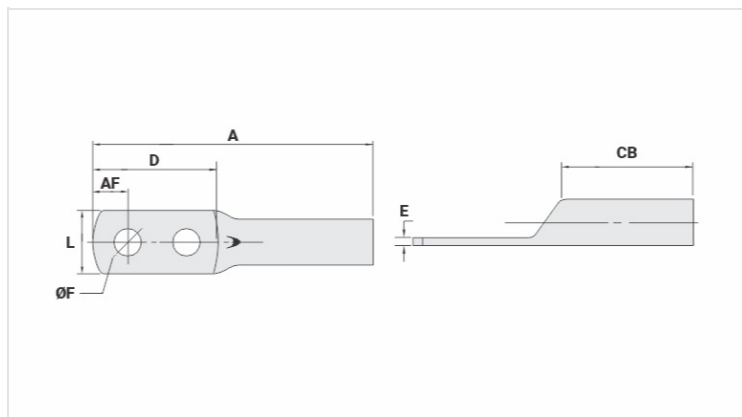
Purpose: Termination of copper conductors.

Characteristics: High electrical conductivity and corrosion resistance. Pad with several hole diameter options and optimum electrical contact.

Applications: Electrical panels, circuit breaker connections, motors, machines, busbars, electrical distribution boards, among others.

Material: Electrolytic copper.

Finish: Tin plated.



Datasheet

Conductors - Cross Section (mm²) 16

Dimensions (mm)

Diâmetro do Furo (mm) 6,5

Parafuso*

Pol. 1/4

Métrico M6

L 11,3

A 53,5

CB 20,0

AF 6,0

D 29,5

E 2,0

Current (A) 137

Application Tool

Alicate Mecânico

Modelo AT-60/68

Matriz (AT-60) IW-5

Alicate Hidráulico (AY-96 / CY-96)

Matriz Circunf. IU-5

Matriz Hexagonal H-5

Package

Qtd / Emb

50

Peso Unit. (g)

9,60