

**TAL-2 - EXTRUDED ALUMINUM TERMINAL (TWO HOLES)**

TAL-49-2

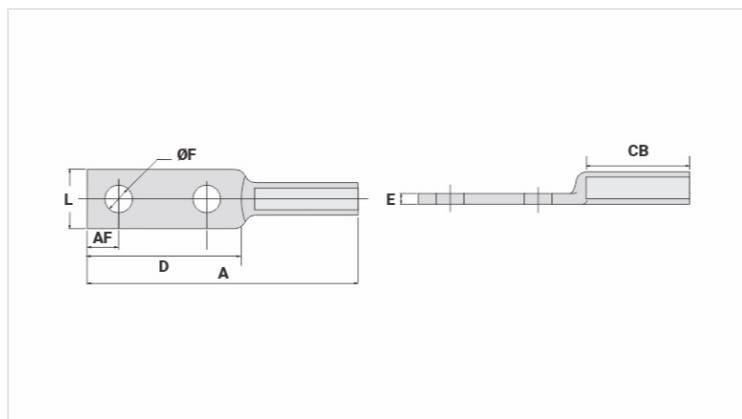
**Description**

**Purpose:** Cable to busbar termination for CA or CAA aluminum cables.

**Characteristics:** Compression connection. High electrical conductivity and resistance to corrosion.

**Application:** Power distribution lines.

**Material:** Extruded aluminum. Supplied with antioxidant compound INTELTROX.



**Datasheet**

**Conductors**

CA Compacto (mm <sup>2</sup> )	70
AWG/MCM	
CA	2/0
CAA	-

**Dimensions**

Diâmetro do Furo (mm)	14,00
Parafuso	
Pol.	1/2
Métrico	M12
L	24,0
A	155,0
CB	66,0
D	76,0
E	6,0
AF	16,0

**Application Tool**

Alicate Mecânico (AT-60 4t)	
Matriz	IW-243
Compressões	6
Alicate Hidráulico (AY-96 / CY-96)	
Matriz	IU-243
Compressões	3

**Package**

Qtd / Emb

80

Peso Unit. (g)

55,00