

TALF - CAST ALUMINUM TERMINAL

TALF-38-2

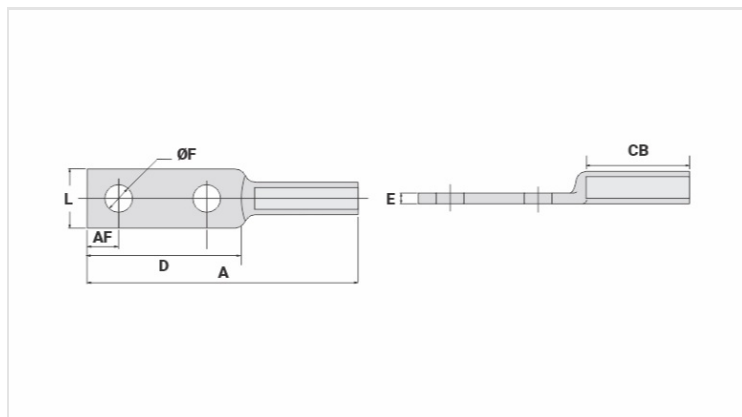
Description

Purpose: Cable to busbar termination for CA or CAA aluminum cables.

Characteristics: Compression connection. High electrical conductivity and corrosion resistance. Hole diameter per NEMA standard.

Application: Power distribution lines.

Material: Cast aluminum. Supplied with antioxidant compound INTELTROX.



Datasheet

Conductors

CA Compacto (mm ²)	35 - 50
AWG/MCM	
CA	2
CAA	2

Dimensions

Diâmetro do Furo (mm)	14,0
Parafuso	
Pol.	1/2
Métrico	M12
L	30,0
A	137,0
CB	52,0
D	78,0
E	5,0
AF	16,0

Application Tool

Alicate Mecânico (AT-60 4t)	
Matriz	IW-239
Compressões	4
Alicate Hidráulico (AY-96 / CY-96)	
Matriz	IU-239

Package

Qtd / Emb	100
Peso Unit. (g)	48,40