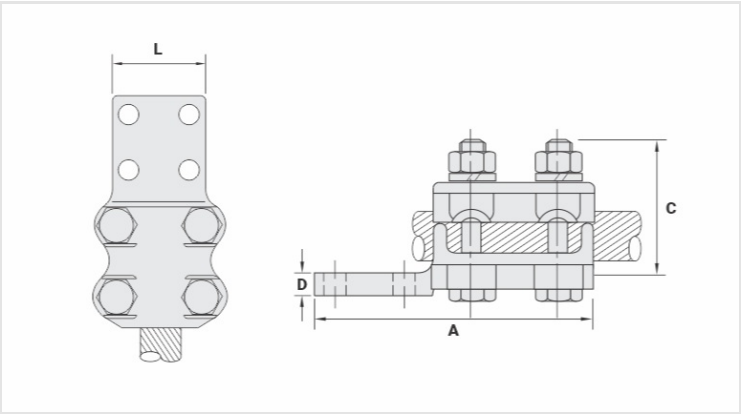


TTAC - ALUMINUM CABLE-BUSBAR TERMINAL (STRAIGHT CONNECTION)

TTAC-350-600-4N

Description

- Purpose:** Cable to busbar termination for CA or CAA aluminum cables.
- Characteristics:** Mechanical connection. High electrical conductivity. Pad with two or four NEMA standard holes. There are lugs that lock the head of the screws.
- Application:** Power distribution lines and substations.
- Material:** Cast aluminum alloy and hot galvanized steel fittings.
- Application Tool:** Star or open-ended wrench.
- Note:** Using of the antioxidant compound INTELTROX is recommended.



Datasheet

Conductors

CA (AWG/MCM)	350 - 600
CAA (AWG)	336,4 - 477

Screw

Dimensions

L	78,0
A	170,0
C	70,0
D	11,0
Figura	3

Package

Qtd / Emb	6
Peso Unit. (g)	913,00