

**CTRA - ALUMINUM CABLE-BUSBAR TERMINAL (STRAIGHT OR 90° CONNECTION)**

CTRA-6-636-2N

**Description**

**Purpose:** Cable to busbar termination for CA or CAA aluminum cables.

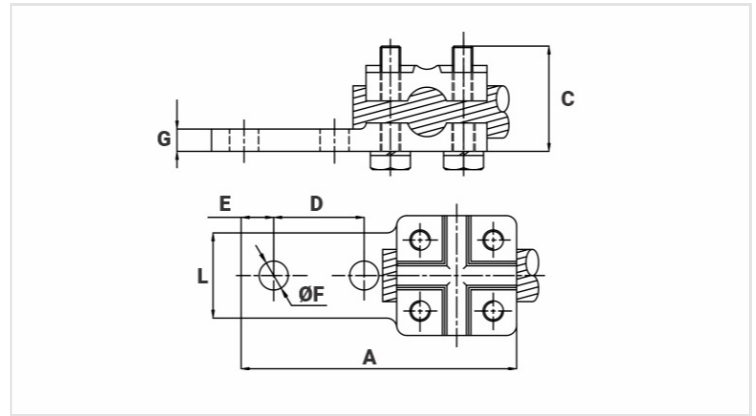
**Characteristics:** Mechanical connection. High electrical conductivity. Pad with two or four holes NEMA standard. With a single item meets a wide range of cables. Straight or 90° in relation to the bus.

**Application:** Power distribution lines and substation.

**Material:** Cast aluminum alloy and stainless steel fittings.

**Application Tool:** Star or open-ended wrench.

**Note:** The use of the antioxidant compound INTELTROX is recommended.



**Datasheet**

**Conductors**

mm <sup>2</sup>	16 - 300
AWG/MCM	6 - 636

**Dimensions**

L	42,0
A	137,0
C	45,0
D	44,5
E	16,0
ØF	14,0
G	11,0
Parafuso	M10
Figura	1

**Package**

Qtd / Emb	6
Peso Unit. (g)	383,00