

**CTRB - COPPER CABLE-BUSBAR TERMINAL (STRAIGHT OR 90° CONNECTION)**

CTRB-6-636-4N

**Description**

**Purpose:** Cable to busbar termination for copper or CA or CAA aluminum cables.

**Characteristics:** Tightening connection. High electrical conductivity. Pad with two or four holes NEMA standard. Meets a wide range of cables. Straight or 90° in relation to the bus.

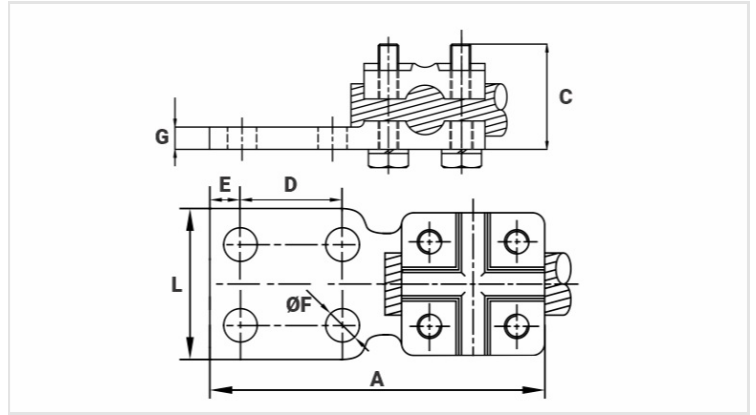
**Application:** Power distribution lines and substations.

**Material:** Bronze terminal, fittings in Copper alloy or hot-dip galvanization.

**Application Tool:** Star or open-ended wrench.

**Finish:** Tinned.

**Note:** For aluminum conductors, the use of the antioxide compound INTELTROX is recommended.



**Datasheet**

**Conductors**

mm <sup>2</sup>	16 - 300
AWG/MCM	6 - 636

**Dimensions**

L	137,0
A	45,0
C	76,0
D	44,5
E	16,0
ØF	14,0
G	11,0
Parafuso	M10
Figura	2

**Package**

Qtd / Emb	5
Peso Unit. (g)	1122,55