

TA - TIGHTENING TERMINAL (SYMMETRIC SERIES)

TA-16

Description

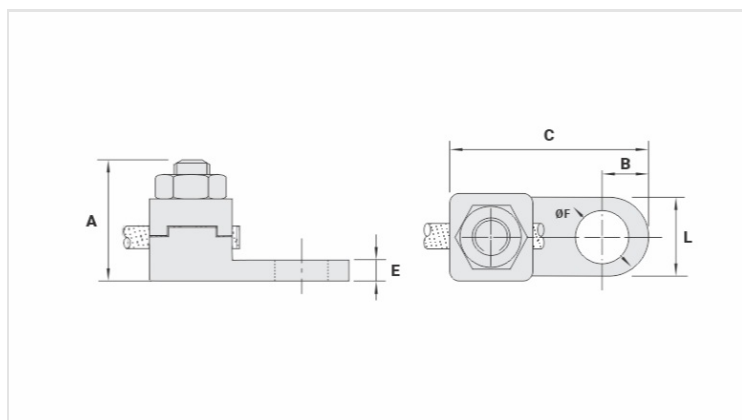
Purpose: Cable-busbar termination for copper cable (classes - 1/2/3). Connection to busbars, switchboards, electrical panels and others.

Characteristics: Mechanical pressure connection. Pad with one hole.

Application: Electrical installations in general (residential, building, industrial).

Material: Copper alloy terminal, electrolytic zinc plated steel nut.

Application Tool: Star or open-ended wrench.



Datasheet

Conductor

mm ²	16
AWG/MCM	6

Screw

Pol.	1/4
Métrico	M6

Dimensions

L	11,0
A	21,0
C	28,0
B	6,5
E	3,5
ØF	6,5

Package

Qtd / Emb	100
Peso Unit. (g)	24,00