

TA - TIGHTENING TERMINAL (SYMMETRIC SERIES)

TA-50

Description

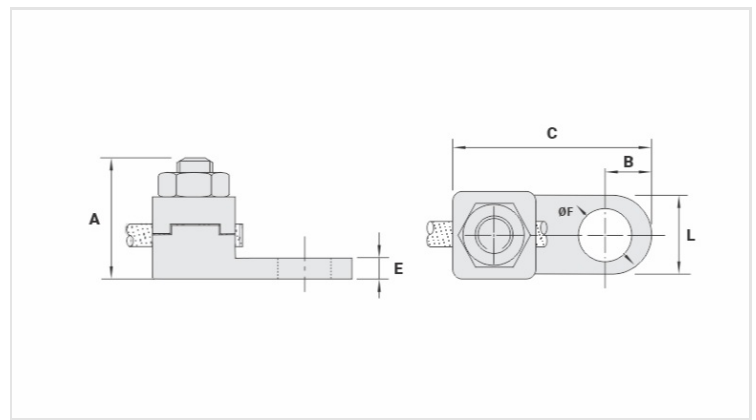
Purpose: Cable-busbar termination for copper cable (classes - 1/2/3). Connection to busbars, switchboards, electrical panels and others.

Characteristics: Mechanical pressure connection. Pad with one hole.

Application: Electrical installations in general (residential, building, industrial).

Material: Copper alloy terminal, electrolytic zinc plated steel nut.

Application Tool: Star or open-ended wrench.



Datasheet

Conductor

mm ²	50
AWG/MCM	1/0

Screw

Pol.	5/16
Métrico	M8

Dimensions

L	16,0
A	29,0
C	41,0
B	8,5
E	4,0
ØF	8,5

Package

Qtd / Emb	30
Peso Unit. (g)	58,80