

TA - TIGHTENING TERMINAL (SYMMETRIC SERIES)

TA-95

Description

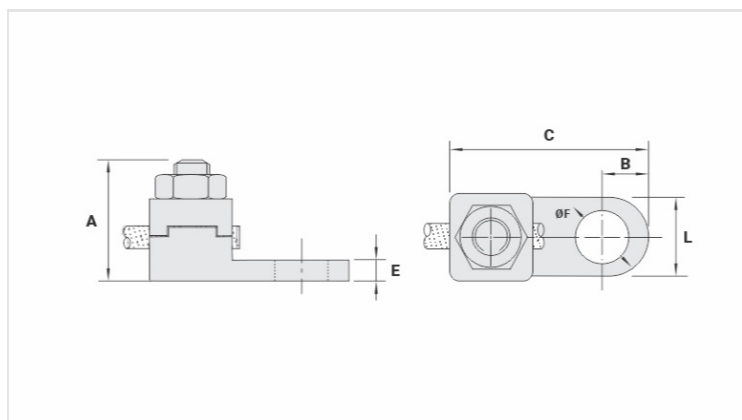
Purpose: Cable-busbar termination for copper cable (classes - 1/2/3). Connection to busbars, switchboards, electrical panels and others.

Characteristics: Mechanical pressure connection. Pad with one hole.

Application: Electrical installations in general (residential, building, industrial).

Material: Copper alloy terminal, electrolytic zinc plated steel nut.

Application Tool: Star or open-ended wrench.



Datasheet

Conductor

mm ²	95
AWG/MCM	3/0

Screw

Pol.	3/8
Métrico	M10

Dimensions

L	21,0
A	34,0
C	50,5
B	10,5
E	5,0
ØF	10,5

Package

Qtd / Emb	30
Peso Unit. (g)	104,00