

**TA - TIGHTENING TERMINAL (SYMMETRIC SERIES)**

TA-185

**Description**

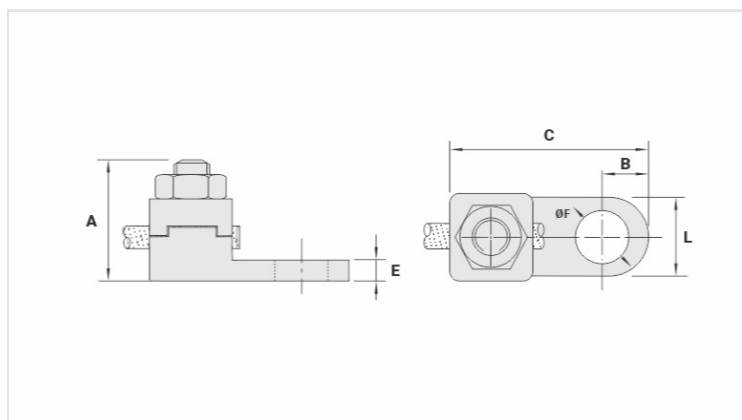
**Purpose:** Cable-busbar termination for copper cable (classes - 1/2/3). Connection to busbars, switchboards, electrical panels and others.

**Characteristics:** Mechanical pressure connection. Pad with one hole.

**Application:** Electrical installations in general (residential, building, industrial).

**Material:** Copper alloy terminal, electrolytic zinc plated steel nut.

**Application Tool:** Star or open-ended wrench.



**Datasheet**

**Conductor**

mm <sup>2</sup>	185
AWG/MCM	300

**Screw**

Pol.	1/2
Métrico	M12

**Dimensions**

L	26,0
A	41,0
C	65,0
B	13,5
E	6,0
ØF	13,5

**Package**

Qtd / Emb	15
Peso Unit. (g)	195,20