

TA - TIGHTENING TERMINAL (SYMMETRIC SERIES)

TA-400

Description

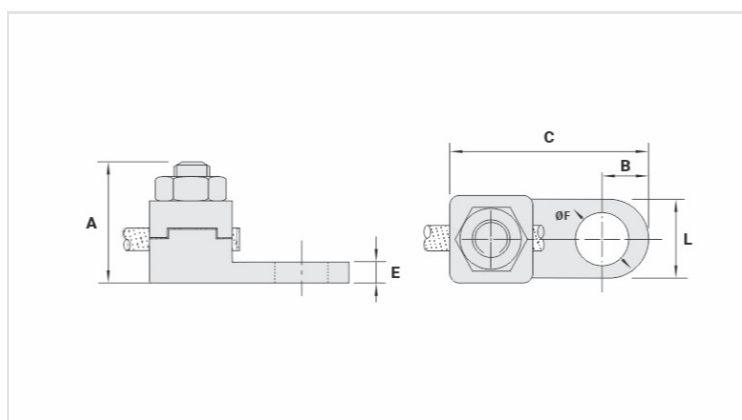
Purpose: Cable-busbar termination for copper cable (classes - 1/2/3). Connection to busbars, switchboards, electrical panels and others.

Characteristics: Mechanical pressure connection. Pad with one hole.

Application: Electrical installations in general (residential, building, industrial).

Material: Copper alloy terminal, electrolytic zinc plated steel nut.

Application Tool: Star or open-ended wrench.



Datasheet

Conductor

mm ²	400
AWG/MCM	800

Screw

Pol.	5/8
Métrico	M16

Dimensions

L	39,0
A	61,0
C	94,0
B	19,5
E	9,0
ØF	18,0

Package

Qtd / Emb	8
Peso Unit. (g)	563,00