

**TAC - ADAPTER TERMINALS FOR WEDGE CONNECTOR**

TAC-336,4-4N

**Description**

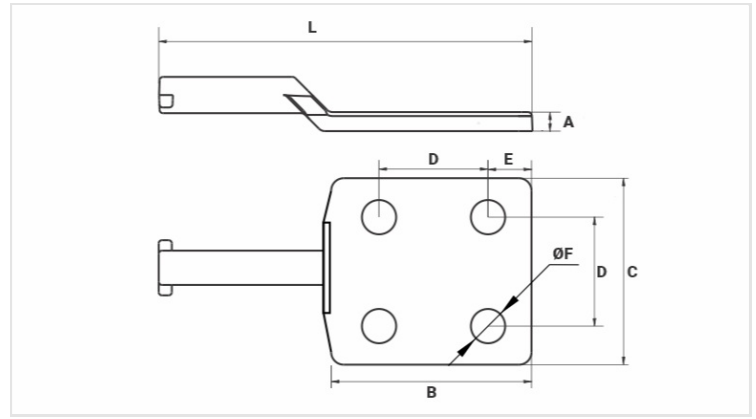
**Purpose:** Termination on sectioning switches and busbars in conjunction with aluminum wedge connectors.

**Characteristics:** High electrical conductivity and corrosion resistance. Pad with two or four holes NEMA standard.

**Application:** Power distribution lines.

**Material:** Cast aluminum alloy.

**Application Tool:** Impact tool for wedge connector.



**Datasheet**

**Terminal (Pin Gauge)**

AWG/MCM	336,4
Ø (mm)	16,9

**Conductors (AWG/MCM)**

336,4 | 397,5 | 477 | 556,5

**Wedge Type Connectors\*\***

CADC-401\* | CADC-503

**Dimensions**

L	178,0
A	7,0
C	76,0
B	78,0
D	44,5
E	16,0
ØF	14,3

**Package**

Qtd / Emb	25
Peso Unit. (g)	166,80