

**TABA - ALUMINUM FLAG ADAPTER TERMINAL**

TABA-13-2N

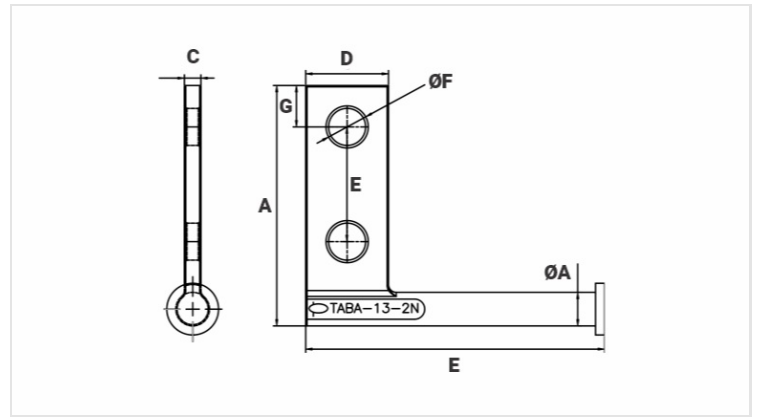
**Description**

**Purpose:** Used for disconnecting switch terminals and fuse switches for temporary grounding.

**Characteristics:** High electrical conductivity and corrosion resistance. Pad with four holes NEMA standard.

**Application:** Power distribution lines.

**Material:** Cast aluminum alloy.



**Datasheet**

**Dimensions (mm)**

L	115,5
A	93,0
C	6,4
ØA	13,0
D	32,0
E	44,5
ØF	14,3
G	16,0

**Package**

Qtd / Emb	40
Peso Unit. (g)	76,00