

**LAR - SPLICE SLEEVE FOR ALUMINUM CABLE (FULL TRACTION)**

LAR-44

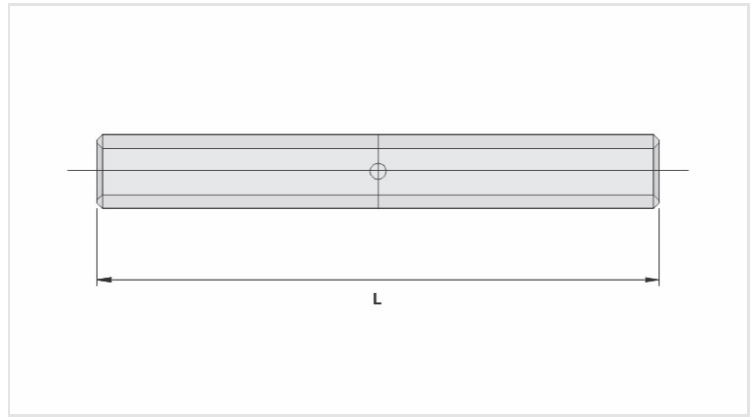
**Description**

**Purpose:** Aluminum cable splice (bare or insulated network), full traction.

**Characteristics:** Compression connection. High electrical conductivity and resistance to corrosion. Supplied with centering guide.

**Application:** Power distribution lines.

**Material:** Extruded aluminum. Supplied with antioxidant INTELTROX.



**Datasheet**

**Conductors**

CA (AWG/MCM)	1/0
Compacto (mm <sup>2</sup> )	50 - 70

**Dimension (mm) - L**

185,0

**Application Tool**

Alicate Mecânico (AT-60 4t)	
Matriz	IW-243
Compressões	12
Alicate Hidráulico (AY-96 / CY-96)	
Matriz	IU-243
Compressões	6

**Package**

Qtd / Emb	100
Peso Unit. (g)	58,80