

LAR - SPLICE SLEEVE FOR ALUMINUM CABLE (FULL TRACTION)

LAR-49

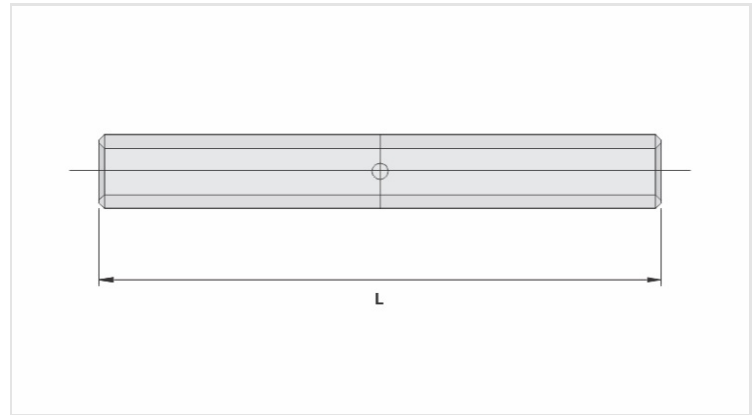
Description

Purpose: Aluminum cable splice (bare or insulated network), full traction.

Characteristics: Compression connection. High electrical conductivity and resistance to corrosion. Supplied with centering guide.

Application: Power distribution lines.

Material: Extruded aluminum. Supplied with antioxidant INTELTROX.



Datasheet

Conductors

CA (AWG/MCM)	2/0
Compacto (mm ²)	70

Dimension (mm) - L

235,0

Application Tool

Alicate Mecânico (AT-60 4t)	
Matriz	IW-245
Compressões	16
Alicate Hidráulico (AY-96 / CY-96)	
Matriz	IU-245
Compressões	8

Package

Qtd / Emb	50
Peso Unit. (g)	99,00