

**LAR - SPLICE SLEEVE FOR ALUMINUM CABLE (FULL TRACTION)**

LAR-58

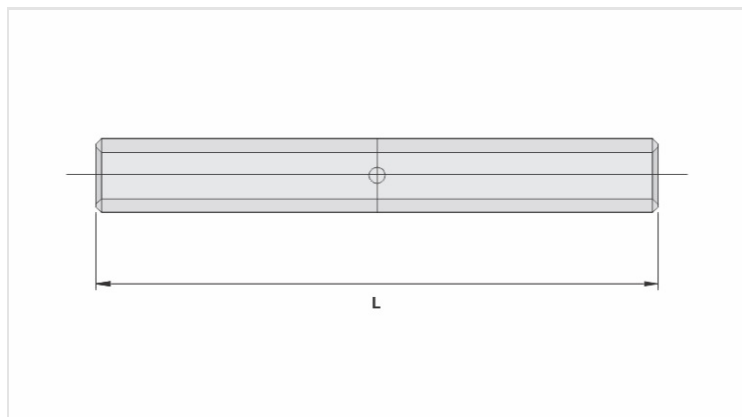
**Description**

**Purpose:** Aluminum cable splice (bare or insulated network), full traction.

**Characteristics:** Compression connection. High electrical conductivity and resistance to corrosion. Supplied with centering guide.

**Application:** Power distribution lines.

**Material:** Extruded aluminum. Supplied with antioxidant INTELTROX.



**Datasheet**

**Conductors**

CA (AWG/MCM) 3/0

Compacto (mm<sup>2</sup>) 95

**Dimension (mm) - L** 184,0

**Application Tool**

Alicate Mecânico (AT-60 4t)

Matriz IW-247

Compressões 16

Alicate Hidráulico (AY-96 / CY-96)

Matriz IU-247

Compressões 8

**Package**

Qtd / Emb 50

Peso Unit. (g) 88,00