

LAR - SPLICE SLEEVE FOR ALUMINUM CABLE (FULL TRACTION)

LAR-60

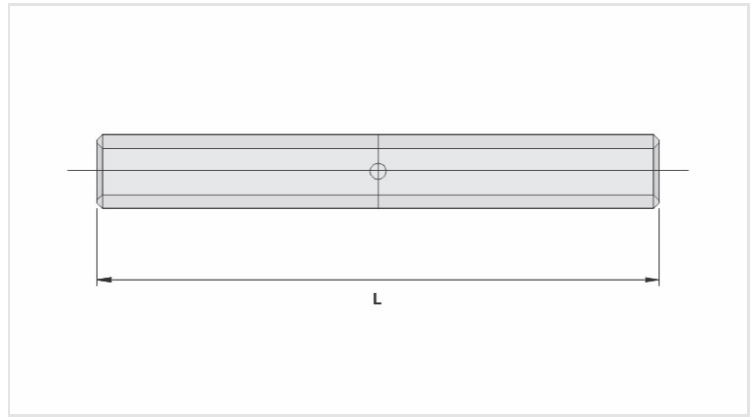
Description

Purpose: Aluminum cable splice (bare or insulated network), full traction.

Characteristics: Compression connection. High electrical conductivity and resistance to corrosion. Supplied with centering guide.

Application: Power distribution lines.

Material: Extruded aluminum. Supplied with antioxidant INTELTROX.



Datasheet

Conductors

CA (AWG/MCM)	4/0
Compacto (mm ²)	120

Dimension (mm) - L

266,0

Application Tool

Alicate Mecânico (AT-60 4t)	
Matriz	IW-249
Compressões	24
Alicate Hidráulico (AY-96 / CY-96)	
Matriz	IU-249
Compressões	12

Package

Qtd / Emb	30
Peso Unit. (g)	167,48