

CAL - ALUMINUM COMPRESSION TYPE CONNECTOR

CAL-32 A 32

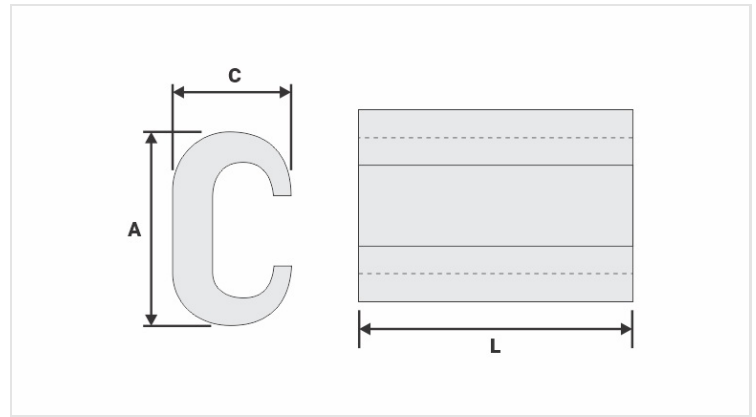
Description

Purpose: Aluminum CA or CAA cable tap. Suitable for aluminum-aluminum connections.

Characteristics: Compression connection. High electrical conductivity and resistance to corrosion.

Application: Power distribution lines.

Material: Extruded aluminum, Supplied with antioxidant compound INTELTROX.



Datasheet

Conductors

Principal

CA (AWG/MCM)	4
CAA (AWG/MCM)	6
Diâmetro (mm)	5,1 - 5,9

Derivação

CA (AWG/MCM)	8 - 4
CAA (AWG/MCM)	6
Diâmetro (mm)	3,7 - 5,9

Dimensions (mm)

L	32,0
A	19,0
C	

Application Tool

AT-60	
Matriz	IW-BG
Compressões	2
AY-96 / CY-96	
Matriz	IU-BG
Compressões	2

Package

Qtd / Emb	200
Peso Unit. (g)	11,70

