

LCBF - CAST ALUMINUM COMPRESSION CONNECTOR WITH STIRRUP

LCBF-60

Description

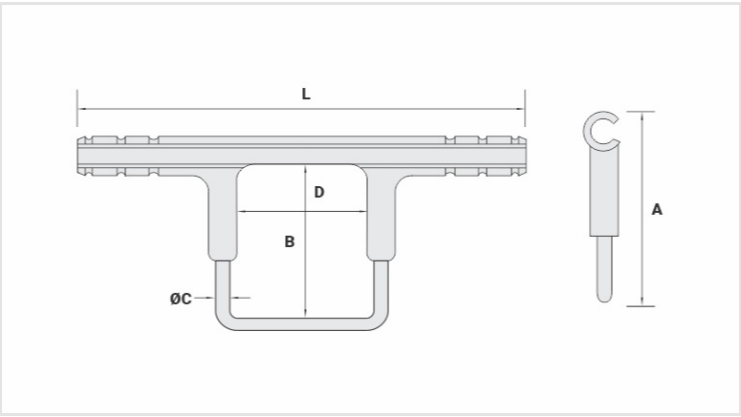
Purpose: Connection with CA, CAA aluminum cables. Enables ing of a hotline clamp oring of up to four wedge type or compression connectors.

Characteristics: Compression connection. High electrical conductivity and corrosion resistance.

Application: Power distribution lines.

Material: Cast aluminum body and stirrup in electrolytic copper. Supplied with antioxidant compound INTELTROX.

Finishing (Stirrup): Tin plated.



Datasheet

Conductors		
CA/CAA		4/0
Dimensions (mm)		
L		283,0
A		127,0
B		89,0
D		87,0
Ø E		8,3
Application Tool		
AT-60		
Matriz		-
Compressões		-
AY-96 / CY-96		
Matriz		IU-L
Compressões		2
Package		
Qtd / Emb		15
Peso Unit. (g)		436,00