

LCBF - CAST ALUMINUM COMPRESSION CONNECTOR WITH STIRRUP

LCBF-72

Description

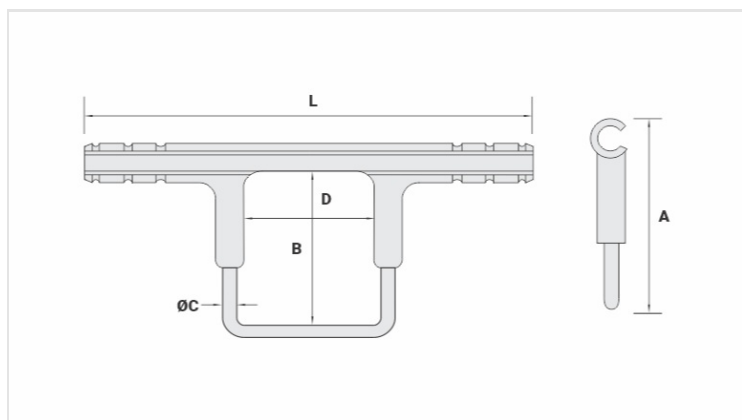
Purpose: Connection with CA, CAA aluminum cables. Enables ing of a hotline clamp oring of up to four wedge type or compression connectors.

Characteristics: Compression connection. High electrical conductivity and corrosion resistance.

Application: Power distribution lines.

Material: Cast aluminum body and stirrup in electrolytic copper. Supplied with antioxidant compound INTELTROX.

Finishing (Stirrup): Tin plated.



Datasheet

Conductors

CA/CAA	336,4
--------	-------

Dimensions (mm)

L	324,0
A	135,0
B	86,0
D	96,0
Ø E	8,3

Application Tool

AT-60	
Matriz	-
Compressões	-
AY-96 / CY-96	
Matriz	IU-M
Compressões	3

Package

Qtd / Emb	10
Peso Unit. (g)	670,00