

AEB - CAST ALUMINUM CONNECTOR WITH STIRRUP

AEB-38-1

Description

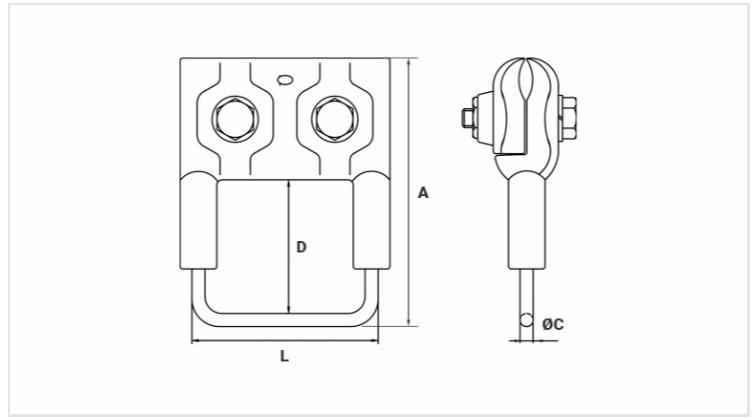
Purpose: Connection with CA, CAA aluminum cables. Enables ing of a hotline clamp.

Characteristics: Tightening connection. High electrical conductivity and corrosion resistance.

Application: Power distribution lines.

Material: Cast aluminum alloy body and stirrup in electrolytic copper.

Application Tool: Star or open ended wrench. Finishing (Stirrup): Tin plated.



Datasheet

Conductors

Principal (AWG/MCM)	10 - 2
Tipo do Condutor	CA
Estribo (AWG)	4

Dimensions (mm)

L	63,0
A	150,0
Ø C	5,2
D	100,0

Screw 1x M10

Package

Qtd / Emb	20
Peso Unit. (g)	220,00