

ACB / ACH / ACB-E - STIRRUPS FOR CONNECTORS

ACH-35

Description

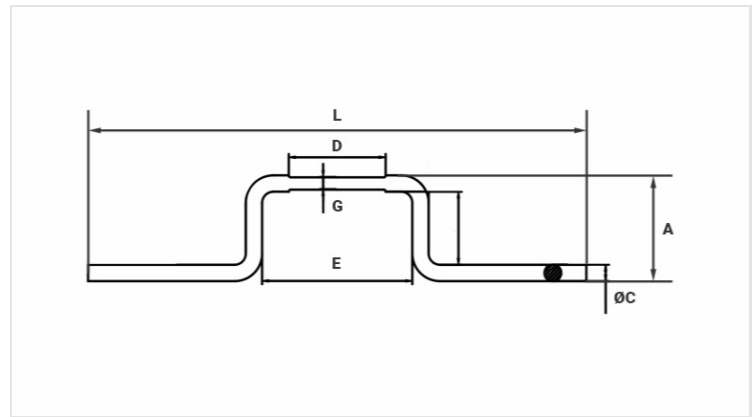
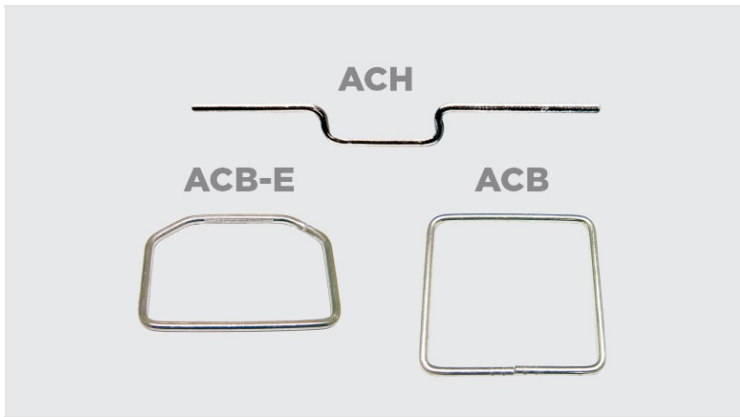
Purpose: Connection between CA, CAA aluminum or copper cables with wedge, compression and hotline clamp connector.

Characteristics: Connection can be by tightening, compression or spring system. High electrical conductivity and corrosion resistance. Stirrups designed for perfect adaptation with connectors / clamps such as CAH, CAC, CDC, CADC, GLV, among others.

Application: Power distribution lines.

Material: Electrolytic copper.

Finish: Tin plated



Datasheet

Cross Section

AWG/MCM 2

mm² 35

Figure 1

Dimensions

L 293,0

A 33,0

Ø C 6,5

D 100,0

E 100,0

F 60,0

Package

Qtd / Emb 100

Peso Unit. (g) 94,40