

GPAL - ALUMINUM PARALLEL GROOVE CLAMP

GPAL-60-1

Description

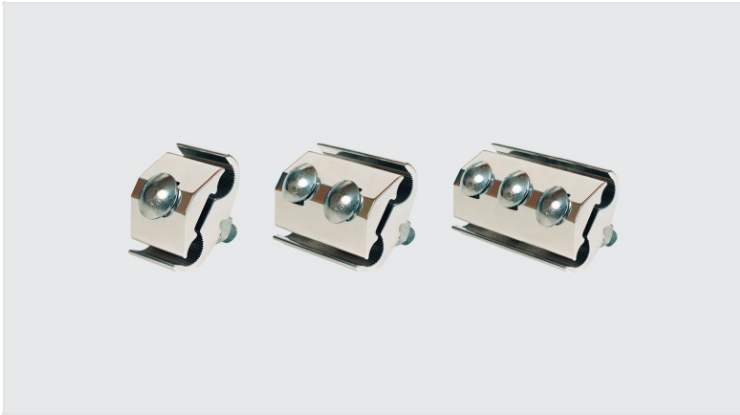
Purpose: Parallel connections cable to cable. Suitable for aluminum to aluminum and aluminum to copper connections.

Characteristics: Tightening connection. High electrical conductivity and corrosion resistance. Allows bimetallic connections. Available with one, two or three screws.

Application: Power distribution networks.

Material: Extruded aluminum alloy and fittings in fire galvanized steel.

Application Tool: Box or open-ended wrench.



Datasheet

Conductors

Principal

Cu/Al

mm²

50 - 120

AWG/MCM

1/0 - 4/0

ACSR

mm²

50 - 120

AWG/MCM

1/0 - 4/0

Diâmetro (mm)

9,36 - 14,31

Derivação

Cu/Al

mm²

10 - 50

AWG/MCM

fio 8 - 1/0

ACSR

mm²

16 - 50

AWG/MCM

6 - 1/0

Diâmetro (mm)

3,26 - 10,11

Dimensions

L

48,0

A

50,0

C	37,0
D	38,0
Parafuso - E	1x 3/8*
Package	
Qtd / Emb	60,0
Peso Unit. (g)	110,00