

GPAL - ALUMINUM PARALLEL GROOVE CLAMP

GPAL-80-P2

Description

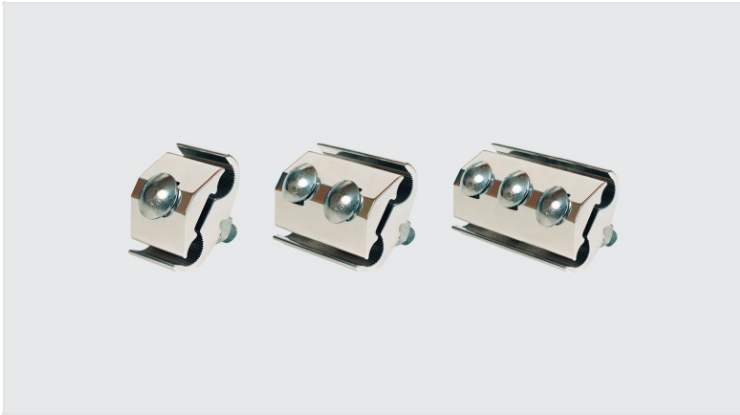
Purpose: Parallel connections cable to cable. Suitable for aluminum to aluminum and aluminum to copper connections.

Characteristics: Tightening connection. High electrical conductivity and corrosion resistance. Allows bimetallic connections. Available with one, two or three screws.

Application: Power distribution networks.

Material: Extruded aluminum alloy and fittings in fire galvanized steel.

Application Tool: Box or open-ended wrench.



Datasheet

Conductors

Principal

Cu/Al

mm²

50 - 240

AWG/MCM

1/0 - 397,5

ACSR

mm²

50 - 240

AWG/MCM

1/0 - 397,5

Diâmetro (mm)

9,36 - 20,44

Derivação

Cu/Al

mm²

50 - 240

AWG/MCM

1/0 - 397,5

ACSR

mm²

50 - 240

AWG/MCM

1/0 - 397,5

Diâmetro (mm)

9,36 - 20,44

Dimensions

L

65,0

A

60,0

C	80,0
D	50,0
Parafuso - E	2x M12
Package	
Qtd / Emb	40
Peso Unit. (g)	360,60